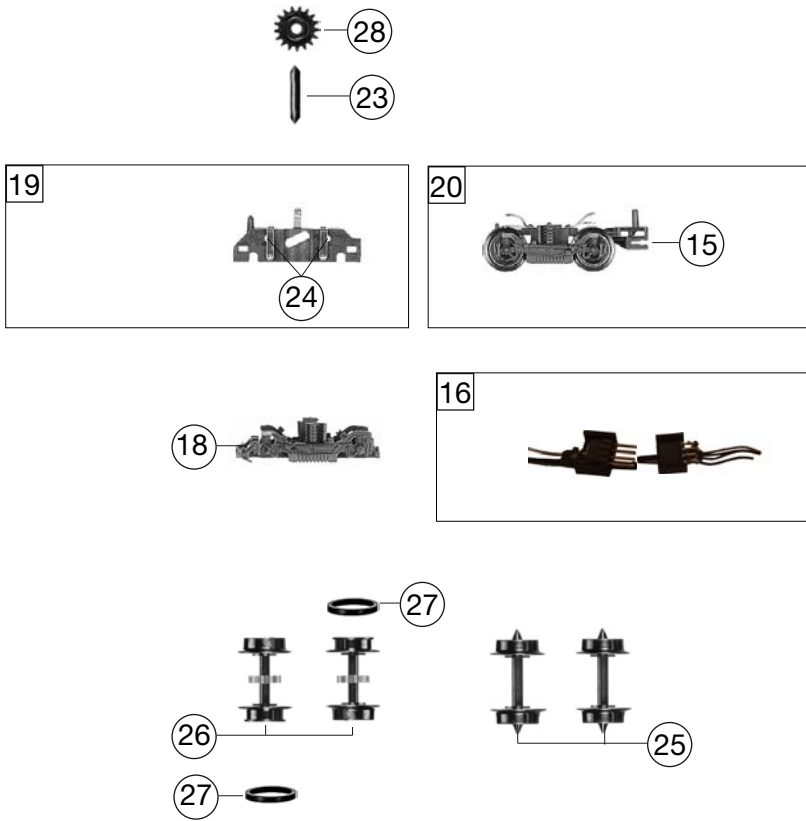
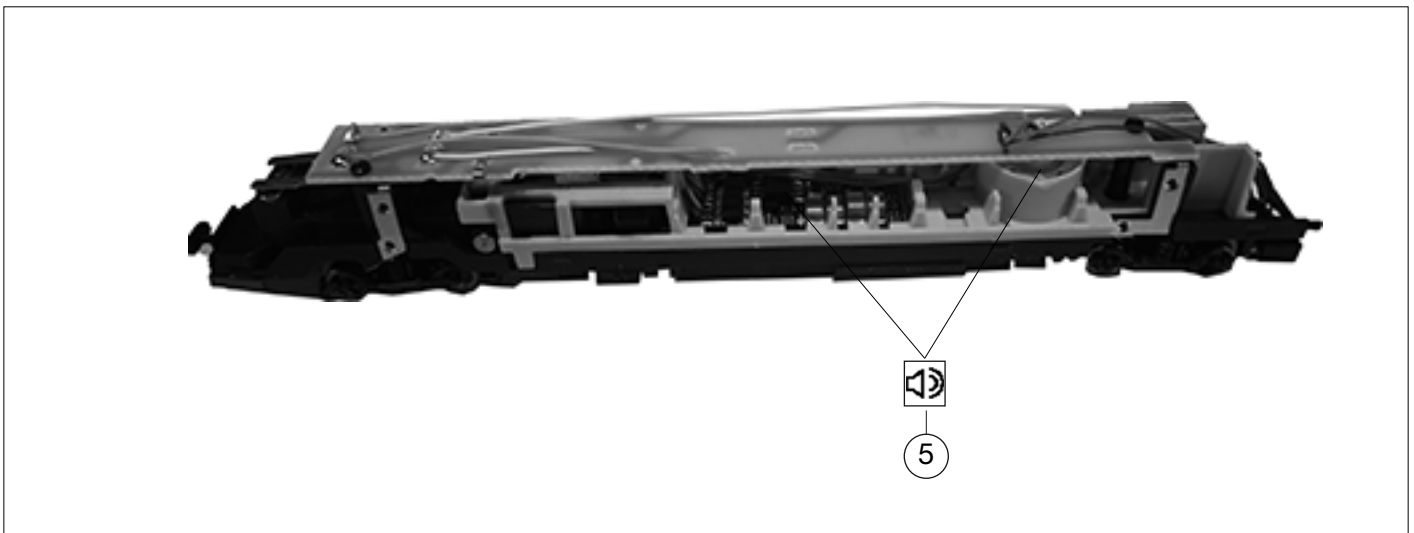
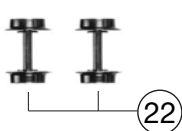
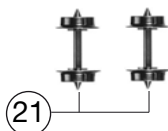
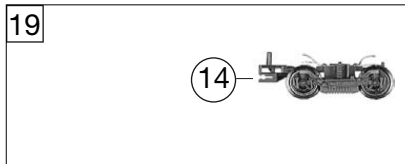
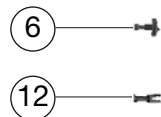
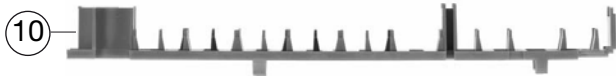
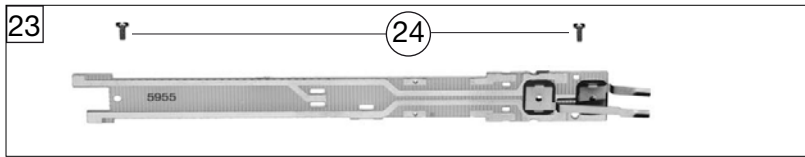
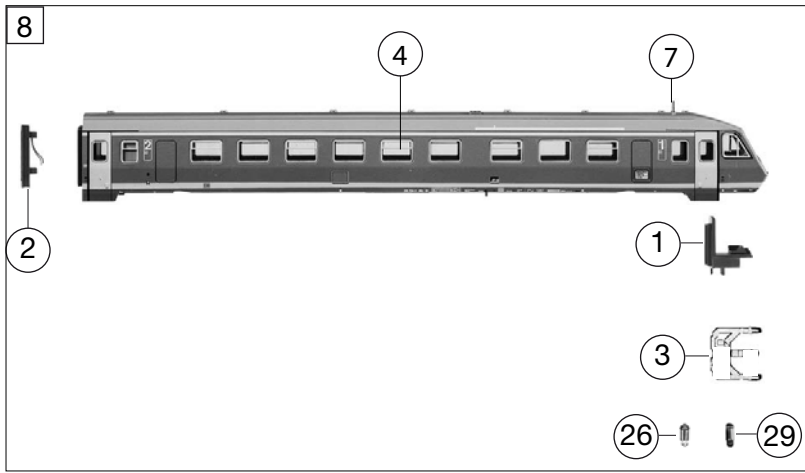


| 77418 | | BR 610 DB-AG | | N |
|---------------------|--|--------------|---------------------|------------------------------|
| Pos. Nr. Pos.no. | Beschreibung Description | | Art.-Nr. Art.no. | Preisgruppe Price bracket |
| 1 | GEHÄUSE KPL. FÜR MOTORWAGEN Motor coach body | | 10741871 | 033 |
| 2 | INNENEINRICHTUNG F.MT M.Sount Interior fittings | | 11741871 | 013 |
| 3 | FUEHRERSTAND Driver's cab inset | | 00127415 | 007 |
| 4 | FALTENBALG F.7418 Gangway bellows | | 00128115 | 006 |
| 5 | LICHTLEITER Light conductor | | 00137415 | 006 |
| 6 | FENSTER-SATZ F.7418 Set of windows | | 00147418 | 015 |
| 7 | BESCHWERUNG Ballast | | 00167415 | 008 |
| 8 | KUPPLUNGSATTRAPPE F.PENDOLINO Coupling imitation | | 00197703 | 005 |
| 9 | ANTENNE SCHWARZ VERNICKELT Antenna | | 00197819 | 002 |
| 10 | DACHWIDERSTAND F.7418-2 Roof resister | | 00197820 | 012 |
| 11 | BODEN F. MOTORWAGEN Motor coach floor plate | | 00307415 | 018 |
| 12 | SCHUERZE F.PENDOLINO 7418 Set of skirts | | 00337418 | 009 |
| 13 | KUPPLUNGSADAPTER Coupling adaptor | | 00387004 | 005 |
| 14 | KUKU-DEICHSEL PENDOLINO VORNE Short coupling reception front side | | 00388008 | 006 |
| 15 | KUKU-DEICHSEL PENDOLINO HINTEN Short coupling reception back side | | 00388009 | 006 |
| 16 | LEITENDE KUPPLUNG 4-POLIG Conducting coupling | | 38900900 | 027 |
| 17 | MOTORBLOCK Motor block | | 00407415 | 017 |
| 18 | DREHGEST.RAHMEN FRONT 7415/18 Bogie framework front side | | 00417415 | 011 |
| 19 | DREHGESTELLBL.M.ZAHN.U.STROMAB Bogie frame with gear wheel& power pick-up | | 00457415 | 017 |
| 20 | DREHGESTE.KPL.M.RADS.U.388009 Bogie complete, with wheelset | | 00477415 | 018 |
| 21 | MOTOR M.SCHWUNGMASS F. 77418 Motor with flywheel | | 00507418 | 032 |
| 22 | KOHLEHALTER Brush holder | | 00507802 | 003 |
| 23 | ACHSE Axle | | 00527008 | 001 |
| 24 | ACHSE Axle | | 00527009 | 001 |
| 25 | RADSATZ KPL. SPITZENACHSE Wheelset complete | | 00537023 | 007 |
| 26 | RADSATZ M.Z.M.1 N. Wheelset complete with gear wheel, 1 trac. Tyre | | 00537032 | 011 |
| 27 | HAFTREIFEN Traction tyre | | 00547001 | 001 |
| 28 | STIRNRAD Z:17 SCHWARZ Gera wheel | | 00567146 | 003 |
| 29 | SCHNECKE D = 4MM L = 9MM Worm gear D=4mm, L=9mm | | 00567607 | 004 |
| 30 | ENTSTOERDROSSEL Suppressor choke | | 00644101 | 007 |
| 31 | ENTSTOERKONDENSATOR Anti-noise capacitor | | 00644202 | 006 |
| 32 | SCHALTPL.F.TK M.M.PENDO.77418 Switch plate | | 65711400 | 020 |
| 33 | LAUTSPRECHER Loudspeaker | | 68700100 | 016 |
| 34 | SOUND-DECODER MIT 8 LITZEN UNT Sound-decoder | | 68741871 | --- |



| 77418 | | BR 610 DB-AG | | = | N |
|----------------------|--|----------------------|------------------------------|---|---|
| Pos. Nr. Pos. no. | Beschreibung Description | Art.-Nr. Art. no. | Preisgruppe Price bracket | | |
| 34 | SOUND-DECODER MIT 8 LITZEN UNT Sound-decoder | 68741871 | --- | | |
| 35 | SCHRAUBE Screw | 00700204 | 002 | | |
| 36 | RICHTFEDER F.DEICHSEL L=15 MM Straightening spring | 00767008 | 001 | | |
| 37 | ERSATZ-SCHLEIFKOHLEN Carbon brushes set | 6518 | --- | | |
| 38 | ERS.-GLUEHLAMPE KLAR M.STECKFA Replacement bulb, clear, with plug-in socket | 00006535 | 008 | | |
| -- | STANDARD-STECKKUPPLUNG Clip-in exchange coupling | 9525 | --- | | |
| 40 | ERS.-GLUEHLAMPE ROT M.STECKFSS Replacement bulb, red, with plug-in socket | 00009531 | 009 | | |
| -- | PROFI-STECKKUPPLUNG Profi coupling | 9545 | --- | | |





| 77418 | | BR 610 DB-AG | | | N |
|---------------------|--|---------------------|------------------------------|--|---|
| Pos. Nr. Pos.no. | Beschreibung Description | Art.-Nr. Art.no. | Preisgruppe Price bracket | | |
| 1 | FUEHRERSTAND Driver's cab inset | 00127415 | 007 | | |
| 2 | FALTENBALG F.7418 Gangway bellows | 00128115 | 006 | | |
| 3 | LICHTLEITER Light conductor | 00137415 | 006 | | |
| 4 | FENSTER-SATZ F.7418 Set of windows | 00147418 | 015 | | |
| 5 | BESCHWERUNG Ballast | 00167415 | 008 | | |
| 6 | KUPPLUNGSATTRAPPE F.PENDOLINO Coupling adaptor | 00197703 | 005 | | |
| 7 | ANTENNE SCHWARZ VERNICKELT Antenna | 00197819 | 002 | | |
| 8 | GEHÄUSE KPL. FÜR STEUERWAGEN Trailer coach body | 20741871 | 033 | | |
| 9 | BODEN F. STEUERWAGEN Floor plate for trailer car | 21741871 | 018 | | |
| 10 | INNENEINRICHTUNG F.STEU. Interior fittings | 00257415 | 012 | | |
| 11 | SCHUERZE F.PENDOLINO 7418 Skirt | 00337418 | 009 | | |
| 12 | KUPPLUNGSADAPTER Coupling adaptor | 00387004 | 005 | | |
| 13 | KUKU-DEICHSEL PENDOLINO VORNE Short coupling reception front side | 00388008 | 006 | | |
| 14 | KUKU-DEICHSEL PENDOLINO HINTEN Short coupling reception back side | 00388009 | 006 | | |
| 15 | LEITENDE KUPPLUNG 4-POLIG Conducting coupling | 38900900 | 027 | | |
| 16 | MOTORBLOCK F.7415/18 OHNE MOT. Motor block w/o motor | 00400415 | 015 | | |
| 17 | DREHGEST.RAHMEN FRONT 7415/18 Bogie framework front side | 00417415 | 011 | | |
| 18 | DREHGESTELLBL.M.STROMABNEHMER Bogie block with power pick-up | 00467415 | 014 | | |
| 19 | DREHGESTE.KPL.M.RADS.U.388009 Bogie complete with wheelset | 00477415 | 018 | | |
| 20 | ACHSE Axle | 00527008 | 001 | | |
| 21 | RADSATZ KPL. SPITZENACHSE Wheelset complete | 00537023 | 007 | | |
| 22 | RADSATZ KPL. Wheelset complete | 00537026 | 009 | | |
| 23 | SCHALTPL.F.TK O.M. PEND.77418 Switch plate | 65711500 | 017 | | |
| 24 | SCHRAUBE Screw | 00700204 | 002 | | |
| 25 | RICHTFEDER F.DEICHSEL L=15 MM Straightening spring for shaft | 00767008 | 001 | | |
| 26 | ERS.-GLUEHLAMPE KLAR M.STECKFA Replacement bulb, clear, with plug-in socket | 00006535 | 008 | | |
| 27 | Beleuchtungsgarnitur Illumination set | 9446 | --- | | |
| -- | STANDARD-STECKKUPPLUNG Clip-in exchange coupling | 9525 | --- | | |
| 29 | ERS.-GLUEHLAMPE ROT M.STECKFSS Replacement bulb, red, with plug-in socket | 00009531 | 009 | | |
| -- | PROFI-STECKKUPPLUNG Profi coupling | 9545 | --- | | |