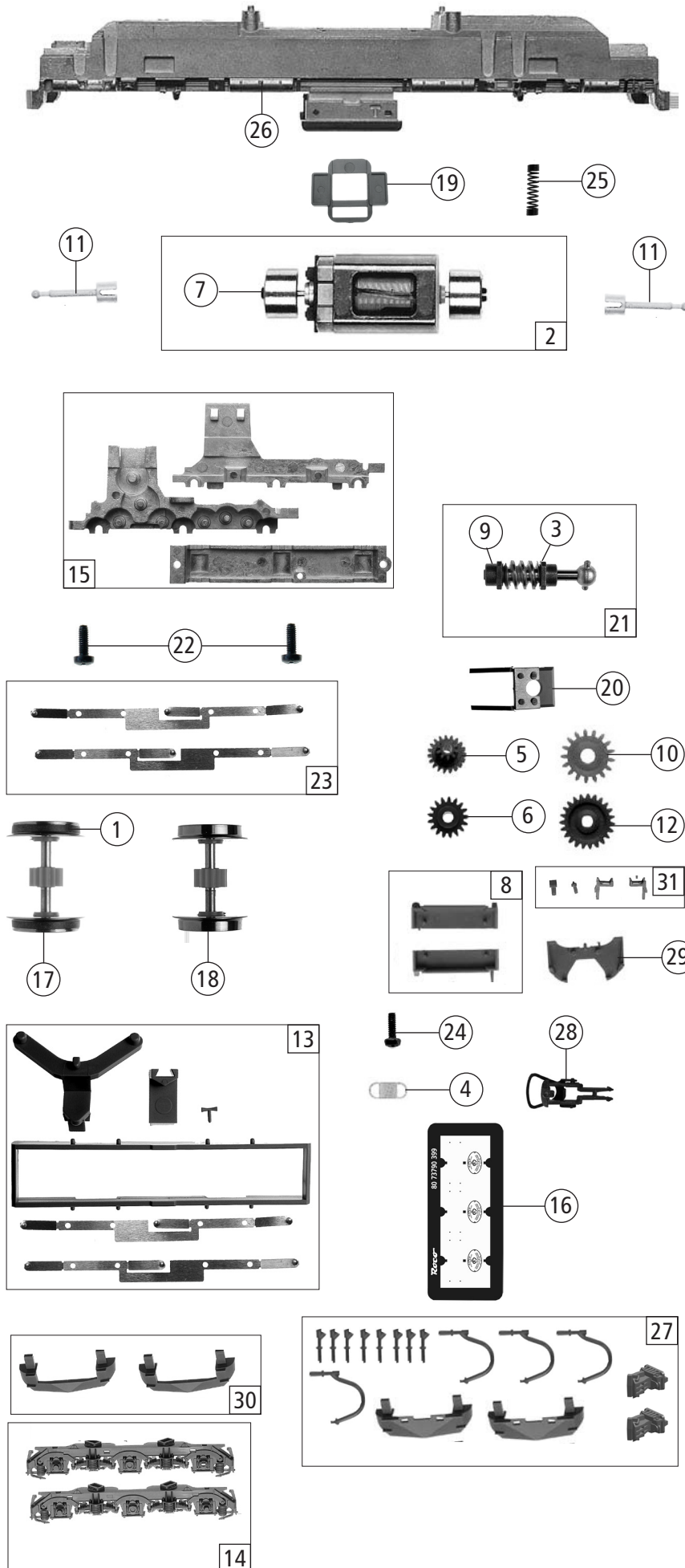


| | | | | |
|--------------|-----|-----|---|---|
| 73790 | SZD | M62 | = | |
| 73791 | | | = | 🔊 |

| Pos. Nr. Pos.no. | Beschreibung Description | Art.-Nr. Art.no. | Preisgruppe Price bracket |
|---------------------|--|---------------------|------------------------------|
| 1 | Dachleiter lackiert Roof ladder painted | 140724 | 5 |
| 2 | Brückenstecker Connector | 133241 | 10 |
| 3 | KW-Antenne lackiert Antenna painted | 140728 | 4 |
| 4 | LED-Flexplatine Flexible LED pcb | 140396 | 8 |
| 5 | Mittelfenster geprägt Middle window printed | 116431 | 5 |
| 6 | Griffstange Handrail | 114843 | 4 |
| 7 | GF-Schraube M 2x5 mm Self-tapping screw M 2x5 mm | 114966 | 3 |
| 8 | Leiste Strip | 130124 | 3 |
| 9 | Lüftergitter Ventilator grill | 124201 | 4 |
| 10 | Umlauf Running board | 140723 | 5 |
| 11 | TS-Führerstand Part set driver's cab | 140403 | 8 |
| 12 | TS-Lichtleiter Part set of light conductor | 116430 | 4 |
| 13 | TS-Gehäuse lackiert Part set body painted | 140731 | 10 |
| 14 | TS-Fensterabdeckung und Sichtschutz Part set window cover and screening | 136455 | 6 |
| 15 | TS-Gehäuse lackiert Part set body painted | 129817 | 10 |
| 16 | Platine kpl. Printed circuit board assembly | 140395 | 19 |
| 17 | Gehäuse kpl. Betr. Nr. M62 1066 Body ass. no. M62 1066 | 140722 | 35 |
| 18 | TS-Luftleitungen, Flexhalter Part set of air lines, flexible holder | 140394 | 7 |
| 19 | Türfenster geprägt Door window printed | 116433 | 5 |
| 20 | Stirnfenster geprägt Front window printed | 140725 | 6 |
| 21 | Lokführer Loco driver | 110407 | 6 |
| 22 | Handgriff Umlauf Handle for running board | 140408 | 5 |
| Sound | | | |
| 23 | Platine kpl. Printed circuit board assembly | 140420 | 32 |
| 24 | Lautsprecher Loudspeaker | 129524 | 16 |
| 25 | Lautsprecherbox Loudspeaker box | 134067 | 5 |
| 26 | Sounddecoder Sound-decoder | 129000 | 39 |

Änderungen in Konstruktion und Ausführung vorbehalten
We reserve the right to change the construction and specification



| Pos. Nr. Pos.no. | Beschreibung Description | Art.-Nr. Art.no. | Preisgruppe Price bracket |
|---------------------|---|---------------------|------------------------------|
| 73790 | SZD M62 | = | |
| 73791 | | = | 🔊 |
| 1 | Hafringsatz 12,5-13,8mm Traction tyre set 12,5-13,8mm | 40066 | --- |
| 2 | Motor Motor | 85111 | 28 |
| 3 | Beilagscheibe Washer | 86108 | 3 |
| 4 | Zugfeder Draw spring | 86208 | 3 |
| 5 | Zwischenzahnrad Z=14 Intermediate gear wheel Z=14 | 86480 | 3 |
| 6 | Schneckenzahnrad Z=15/14 Worm gear wheel Z=15/14 | 86490 | 5 |
| 7 | Kardanschale kurz 1,5mm Cardan reception short 1,5mm | 87129 | 4 |
| 8 | TS-Tankhälfte Part set tank half | 129812 | 6 |
| 9 | Lager für Schneckenachse Bearing for worm gear axle | 89749 | 6 |
| 10 | Zahnrad Z=17 Gear wheel Z=17 | 106722 | 4 |
| 11 | Kardanwelle Cardan shaft | 107011 | 4 |
| 12 | Zahnrad Z=23 gerade M=0,4 Gear wheel Z=23 straight M=0,4 | 111679 | 3 |
| 13 | Teilesatz Fahrwerk Part set chassis | 200047 | 11 |
| 14 | Drehgestellblenden Bogie frames | 140397 | 8 |
| 15 | Getriebesatz 3-teilig Gear set 3-parts | 200052 | 14 |
| 16 | Tafelsatz Set of panels | 140727 | 12 |
| 17 | Radsatz mit 2 Hafringen mit Zahnrad Wheelset w.2 traction tyres w.gear wheel | 140398 | 12 |
| 18 | Radsatz o. Hafring m. Zahnrad Wheelset w/o traction tyre w.gear wheel | 140399 | 11 |
| 19 | Distanzplättchen Spacer chip | 106116 | 3 |
| 20 | Schneckendeckel Worm gear cover | 114820 | 7 |
| 21 | Schneckensatz mit Kardankugel Set of worm gear incl.cardan ball | 114826 | 13 |
| 22 | GF-Schraube M2X6 mm Self-tapping screw M2x6 mm | 114828 | 3 |
| 23 | Radkontaktsatz Wheel contact set | 114832 | 6 |
| 24 | GF-Schraube M1,6X6 mm Self-tapping screw M1,6x6 mm | 114836 | 3 |
| 25 | Kontaktfeder Contact spring | 116812 | 3 |
| 26 | Grundrahmen Basic frame | 200045 | 15 |
| 27 | Zurüstbeutel Bag with accessories | 140726 | 13 |
| 28 | Standardkupplung Standard coupling | 89246 | 6 |
| 29 | Deichselplatte Drawbar plate | 140417 | 5 |
| 30 | Schieneräumersatz offen Set of railguards with opening | 124204 | 6 |
| 31 | TS-Blendensteckteile Set of cover plug-in parts | 140418 | 8 |